

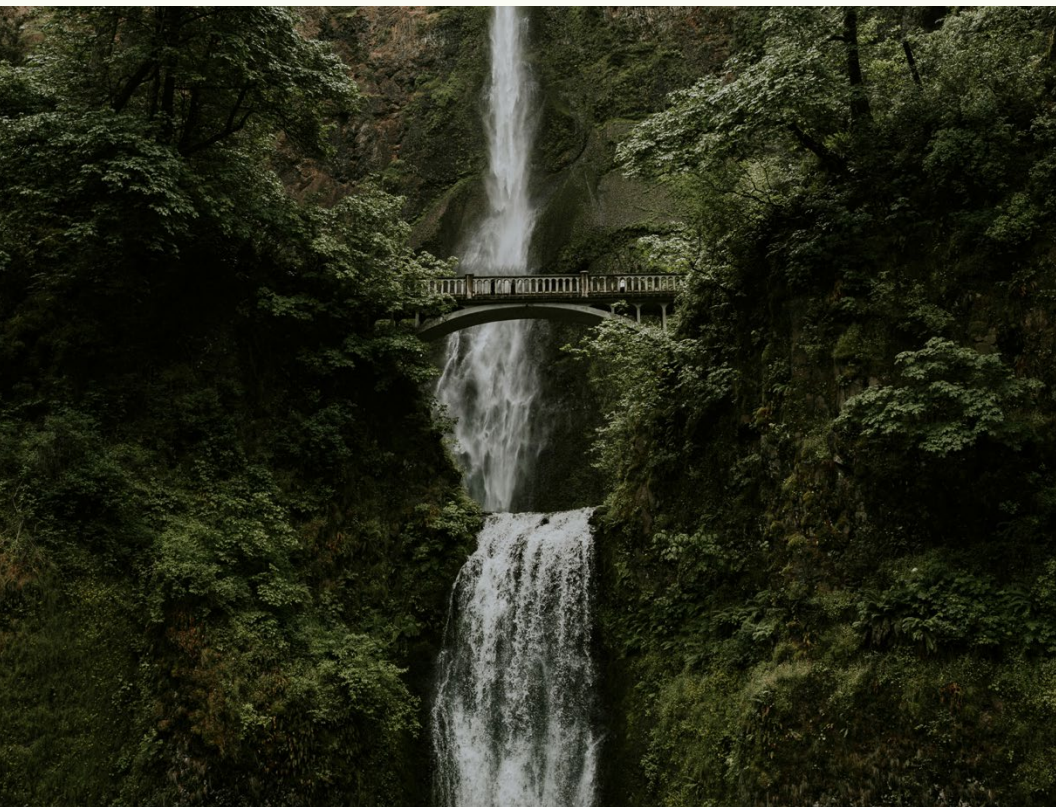
# Pacific Northwest

## UNLEASHED TRAVEL GUIDE

Explore the Region  
and Culture

Discover the Physical  
and Spiritual Needs

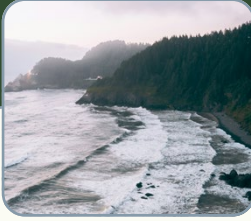
Prepare for your  
Unleashed Experience



[WWW.SEUNLEASHED.COM](http://WWW.SEUNLEASHED.COM)



# Table of Contents



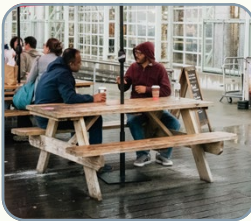
**05** / Regional Overview



**06** / Geography & Landscape



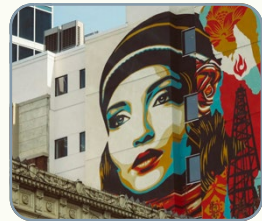
**08** / Climate



**15** / Language & Communication + Daily Life & Social Norms



**16** / Food & Local Flavors



**18** / Arts, Music & Creativity



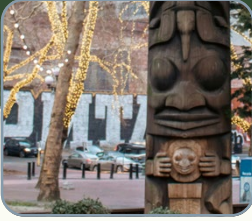
**23** / Community Development



**24** / Prayer for the Region



**25** / Ways to Engage



**10** / Indigenous Peoples & History



**11** / Major Cities & Population Centers



**14** / Culture & Regional Identity



**19** / Recreation & Relationship with Nature



**20** / Religious & Spiritual Landscape



**21** / Identifying the Need

To see the digital version of this guide, scan here:



PLACEHOLDER







# Regional Overview

The **Pacific Northwest (PNW)** is a geographically and culturally distinct region of the United States, most commonly encompassing **Washington, Oregon, and parts of Idaho**, with cultural influence sometimes extending into Northern California and Western Montana. Known for its breathtaking natural beauty, progressive values, and independent spirit, the Pacific Northwest is shaped as much by its environment as by its people.

This region is defined by towering mountain ranges, dense evergreen forests, rugged coastline, and powerful waterways. Its story includes Indigenous nations with deep connections to the land, European settlement, industrial expansion through logging, fishing, and railroads, and modern transformation driven by technology, higher education, and environmental advocacy.

The Pacific Northwest is a place where innovation and wilderness coexist—where global companies operate alongside national parks, and where many residents define success by balance, sustainability, and quality of life rather than wealth or status.



**The Pacific Northwest is a place where innovation and wilderness coexist.**



# Geography & Landscape



The Pacific Northwest contains some of the most diverse terrain in North America.

The Pacific Northwest contains some of the most diverse terrain in North America, and its physical environment strongly shapes how people live, travel, and interact.

## Major Geographic Features

### **MOUNTAIN RANGES**

The Cascade Mountains and Olympic Mountains dominate the western landscape, creating dramatic skylines, heavy snowfall at higher elevations, and natural barriers that divide climate and culture. The Bitterroot Range and Coast Range further define regional boundaries and travel patterns.

### **VOLCANIC PEAKS**

Mountains such as Mount Rainier, Mount Hood, Mount St. Helens, and Mount Baker are active or dormant volcanoes that influence soil fertility, river systems, and local identity. These peaks are both symbols of beauty and reminders of natural power.

## **BODIES OF WATER**

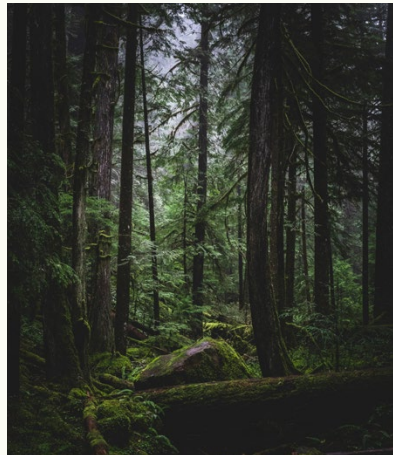
The Pacific Ocean, Puget Sound, Strait of Juan de Fuca, Columbia River, and Snake River provide transportation routes, food sources, economic opportunity, and recreational opportunities. Coastal and river communities are deeply shaped by maritime life.

## **FORESTS**

Temperate rainforests and old-growth evergreen forests cover much of the region, contributing to its lush appearance and supporting logging, conservation, and recreation industries.

## **OTHER LANDSCAPES**

Fertile valleys support agriculture, rocky coastlines attract tourism and fishing, and high desert plateaus east of the Cascades create a striking contrast to the wet western regions. Vineyards are another defining part of the Pacific Northwest landscape—especially in eastern Washington’s Columbia Valley and Oregon’s Willamette Valley—where rolling hills and sunny, dry climates produce world-class environments for grape growing against scenic mountain backdrops.



These varied landscapes influence settlement patterns, local industries, recreation, and even worldview across the region.



# Climate

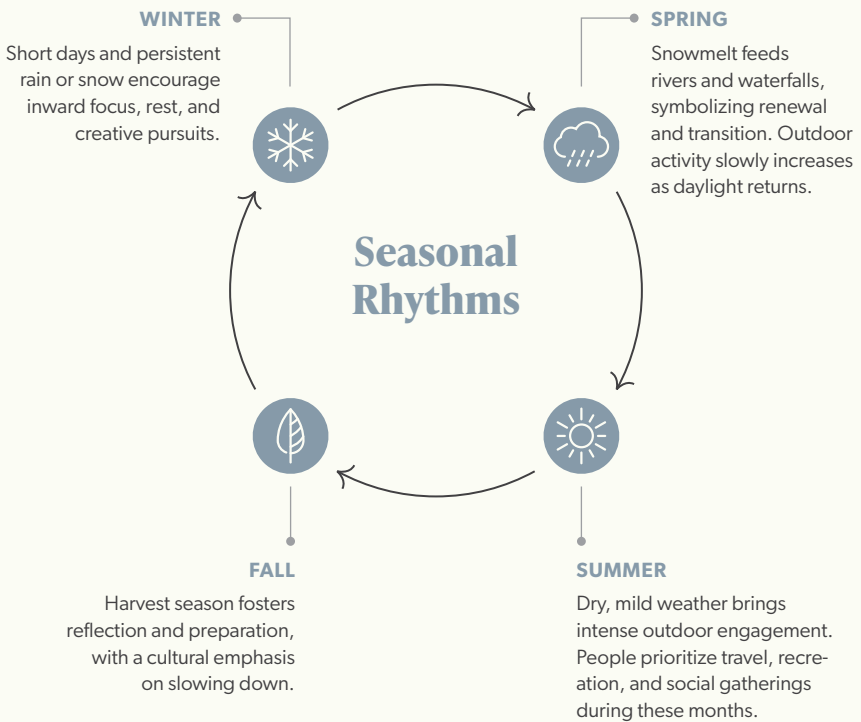


Climate in the Pacific Northwest plays a significant role in shaping daily rhythms, emotional health, and cultural norms.

Climate in the Pacific Northwest plays a significant role in shaping daily rhythms, emotional health, and cultural norms.

## Climate Zones

- **Western PNW (west of the Cascade Mountains):** This area experiences mild temperatures year-round, with frequent rainfall from late fall through spring. The consistent moisture creates lush forests and vibrant greenery, but extended periods of gray skies can also contribute to seasonal affective challenges and a slower, more introspective pace of life.
- **Eastern PNW (east of the Cascades):** Shielded from coastal moisture, this region is much drier, with hot summers and cold winters. Agriculture thrives here, and communities often operate with more traditional rural rhythms tied to planting, harvest, and weather extremes.
  - **The High Desert** of eastern Oregon is a dry, sunny region of sagebrush plains, volcanic rock formations, and snow-capped peaks beyond the Cascade Range rain shadow.





# Indigenous Peoples & History



Long before European settlement, the Pacific Northwest was home to numerous Indigenous nations.

Long before European settlement, the Pacific Northwest was home to numerous Indigenous nations, including the **Coast Salish, Chinook, Nez Perce, Yakama, Kalapuya,** and **Kootenai** peoples.

Traditional life centered on:

- Salmon fishing and river systems
- Cedar carving, weaving, and canoe building
- Strong communal structures
- Spiritual reverence for land, water, and wildlife

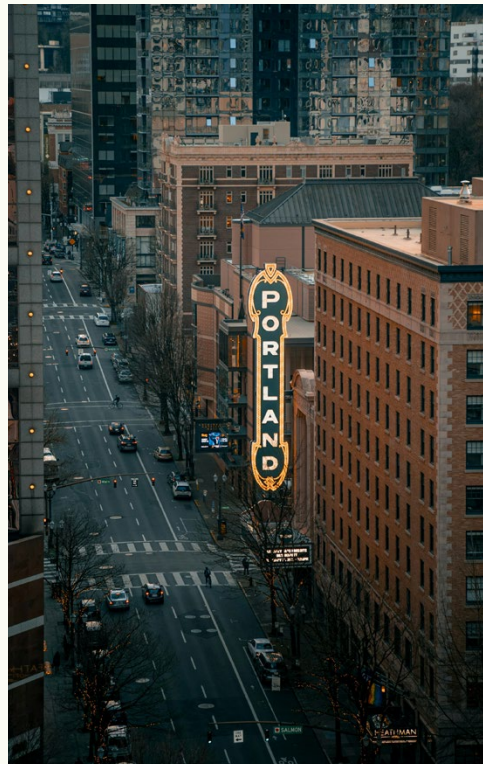
Today, many tribes continue to preserve language, cultural traditions, and sovereignty while also engaging modern society.

# Major Cities & Population Centers

## Key Cities

- 📍 **SEATTLE, WASHINGTON** – Global tech hub and port city; proud of uniqueness
- 📍 **PORTLAND, OREGON** – Known for creativity, food culture, and sustainability
- 📍 **TACOMA, WASHINGTON** – a city with strong industrial roots, a rapidly growing arts scene, and a significant military presence anchored by Joint Base Lewis-McChord.
- 📍 **SPOKANE, WASHINGTON** – Inland city with strong community identity
- 📍 **EUGENE, OREGON** – University town with an outdoor focus that is proud of being unique and rebellious
- 📍 **BOISE, IDAHO** – Rapidly growing city blending tradition and innovation

Urban areas often lean progressive, while rural communities may hold more traditional values, creating cultural and political complexity across the region. Almost more so than anywhere else. The divide culturally between rural and urban is massive.



Seattle, Washington







# Culture & Regional Identity

Pacific Northwest culture is deeply shaped by geography, climate, and history.

**ENVIRONMENTAL STEWARDSHIP:** Respect for nature is central, not merely political. Many residents see care for the environment as a moral responsibility tied to identity and legacy.

**INDIVIDUAL AUTHENTICITY:** People value being genuine over fitting social expectations. Self-expression and personal convictions are respected.

**CREATIVITY AND INNOVATION:** From technology to arts, creativity is seen as a way to solve problems and express meaning.

**WORK-LIFE BALANCE:** Success is often defined by flexibility, personal fulfillment, and connection to place rather than career advancement alone.

These values create a culture that prizes independence, sincerity, and thoughtful living.



Respect for nature is central, not merely political.

# Language & Communication

Communication in the Pacific Northwest tends to be subtle and relationship-driven.

- **Reserved communication:** Conversations are often polite and indirect, with an emphasis on respect and personal boundaries.
- **Conflict avoidance:** Open confrontation is generally avoided. Disagreement may be expressed quietly or indirectly.
- **Relational pace:** Trust develops slowly, but once established, relationships are deep and enduring.

Listening attentively and allowing relationships to develop organically is critical for meaningful connection.



# Daily Life & Social Norms

Casual dress is widely accepted, even in professional settings

Outdoor clothing, especially flannel, is common year-round

Punctuality is valued

Sustainability practices such as recycling and composting are normalized, to the point of being militant in some areas

Social gatherings are often activity-based rather than formal.

# Food & Local Flavors

Food culture in the Pacific Northwest reflects the region's geography, sustainability values, and emphasis on local sourcing.

## Common Foods

### **WILD-CAUGHT SALMON AND SEAFOOD:**

Salmon is central to Indigenous tradition and modern cuisine alike, symbolizing both sustenance and cultural continuity. Other seafood such as halibut and shellfish are widely consumed.

### **DUNGENESS CRAB, OYSTERS, MUSSELS:**

Coastal waters provide abundant shellfish, often enjoyed fresh and simply prepared to highlight natural flavors.

### **APPLES, PEARS, BERRIES, CHERRIES:**

The region's fertile valleys produce large quantities of fruit, making fresh produce and seasonal eating a cultural norm.

### **MUSHROOMS AND ROOT VEGETABLES:**

Foraging and locally grown produce are common, reflecting a close relationship with the land.



**ASIAN FOOD:**

In Seattle and throughout the Pacific Northwest, Asian cuisine is exceptionally diverse and deeply rooted, ranging from traditional Chinese, Vietnamese, Korean, and Japanese establishments to innovative fusion concepts. From bustling dim sum houses and comforting bowls of pho to fresh sushi and Korean barbecue, Asian flavors are a defining and celebrated part of the region's culinary identity.

**MEXICAN & LATIN AMERICAN FOOD:**

From authentic taco trucks to vibrant Oaxacan kitchens and Salvadoran pupuserías, Mexican and Latin American cuisine is deeply woven into the Pacific Northwest's food culture, especially in agricultural communities throughout Washington and Oregon.

**GERMAN & CENTRAL EUROPEAN FOODS:**

Historic European roots and the region's thriving craft beer scene make bratwurst, schnitzel, and beer-hall dining a popular and enduring part of the culinary landscape.

## Beverage Culture

**SPECIALTY COFFEE AND ESPRESSO:**

Coffee culture is deeply ingrained, with cafés serving as social, creative, and work spaces.

**CRAFT BEER AND MICROBREWERIES:**

The PNW is a national leader in craft brewing, emphasizing experimentation and local identity.

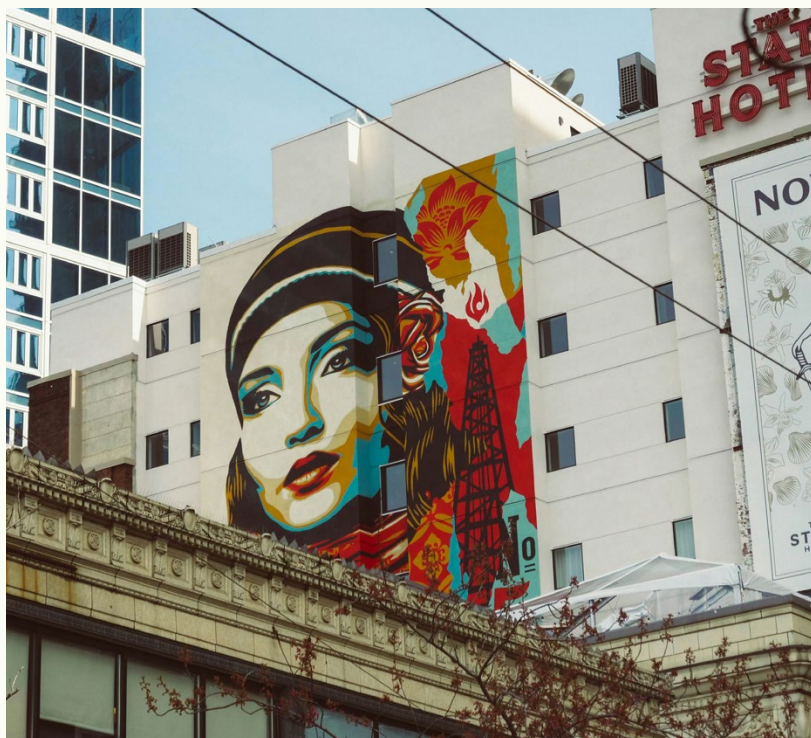
**REGIONAL WINES AND CIDERS:**

Vineyards and orchards support a growing wine and cider scene rooted in regional agriculture.

Farmers markets, food trucks, and farm-to-table restaurants function as gathering places and expressions of community values.



The PNW is  
a national  
leader in  
craft brewing.



## Arts, Music & Creativity



The Pacific Northwest has a long tradition of artistic expression.

The Pacific Northwest has a long tradition of artistic expression.

- Birthplace of the grunge music movement
- Thriving indie music and arts communities
- Emphasis on handmade goods and local artists

Creativity is often viewed as personal expression rather than commercial pursuit.

# Recreation & Relationship with Nature

Outdoor recreation is foundational to life and identity in the Pacific Northwest.

Popular activities include:

**HIKING AND BACKPACKING:**

Extensive trail systems allow people to engage deeply with forests, mountains, and coastlines.

**CAMPING AND TRAIL RUNNING:**

Weekend trips into nature are common and often multigenerational.

**KAYAKING AND PADDLEBOARDING:**

Rivers, lakes, and coastal waters provide accessible ways to interact with the landscape.

**SKIING AND SNOWBOARDING:**

Mountain snowpack supports winter sports and seasonal tourism.

**WILDLIFE OBSERVATION:**

Viewing whales, birds, elk, and other wildlife fosters appreciation for creation and conservation.



Nature is not merely recreational—it is restorative, formative, and central to personal and communal well-being, almost to the extent of being a form of idolatry for some.

# Religious & Spiritual Landscape



The Pacific Northwest is among the least religious regions in the United States.

The Pacific Northwest is among the least religious regions in the United States, yet it remains deeply spiritual in nontraditional ways.

**SPIRITUAL CURIOSITY:** Many residents are open to spiritual ideas but resist labels or institutions.

**SKEPTICISM TOWARD ORGANIZED RELIGION:** Historical abuses, political entanglement, and cultural individualism contribute to distrust.

**ETHICAL LIVING:** Moral frameworks often center on justice, compassion, and care for creation rather than doctrine.

Faith conversations are best approached through lived example, humility, and long-term relationship.





# Identifying the Need

Beneath the Pacific Northwest's natural beauty  
and innovation lies deep, unmet need.

## SOCIAL ISOLATION

Independence and digital  
lifestyles can limit deep  
community connection.

## MENTAL HEALTH STRUGGLES

Anxiety, depression, and  
burnout are prevalent, often  
exacerbated by climate and  
economic pressure.

## HOUSING INSTABILITY

Rapid growth has displaced  
long-term residents and strained  
vulnerable populations.

## SPIRITUAL DISCONNECTION

Many wrestle with meaning  
and purpose while distrusting  
traditional answers.

The region longs for authentic belonging and hope grounded in trust.



# Community Development

Engagement in the Pacific Northwest requires patience, humility, and consistency.



## ENVIRONMENTAL RESTORATION

Conservation work resonates deeply with regional values.



## MENTAL HEALTH AND WELLNESS OUTREACH

Addressing emotional and psychological needs builds trust.



## HOUSING AND COMMUNITY DEVELOPMENT

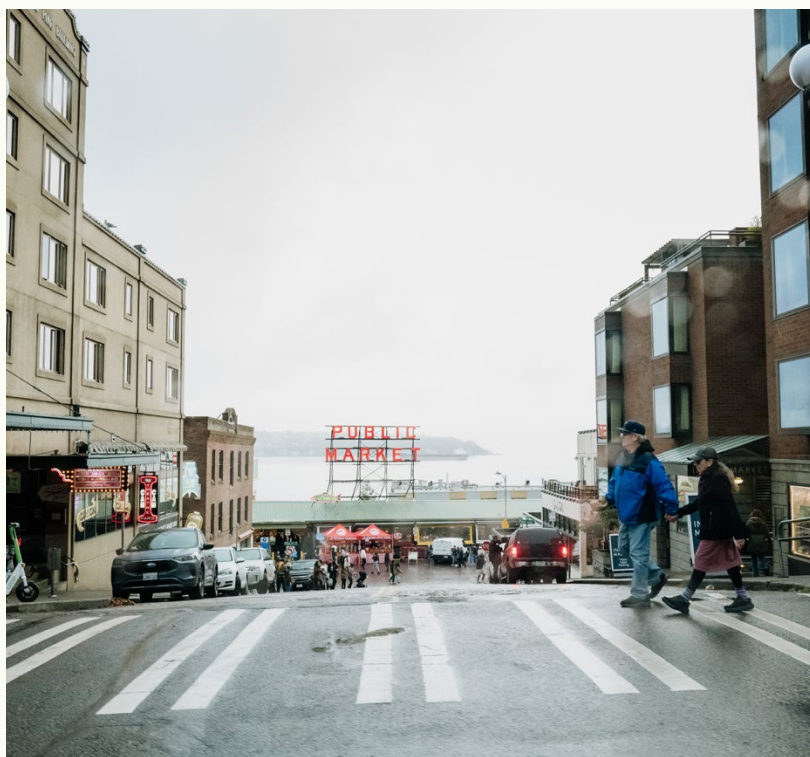
Long-term investment supports stability and dignity.



## YOUTH MENTORSHIP AND EDUCATION

Supporting young people creates generational impact.

Presence and relationship matter far more than programs or quick results.



# Prayer for the Region

## PRAY FOR:

01

Healing from isolation  
and anxiety

02

Restoration of trust  
and community

03

Wisdom for leaders  
and organizations

04

Openness to hope,  
truth, and grace

# Ways to Engage

## Short Term Trips

Discover the unique opportunity to serve on a short-term mission trip to the Pacific Northwest (PNW)—a region known for its natural beauty, vibrant cities, and deep spiritual need.



### STUDENT OPPORTUNITIES

Give students the chance to live out their faith in real, tangible ways through a short-term mission trip to the Pacific Northwest. Designed specifically for high schoolers, these trips combine hands-on service, leadership development, and spiritual growth. Students partner with local church plants and community organizations, serve neighborhoods in need, and build meaningful relationships—all while stepping outside their comfort zones. It's an opportunity to deepen their faith, discover their gifts, and see how God can use them right now to make an impact.



**These trips combine hands-on service, leadership development, and spiritual growth.**



### FAMILY OPPORTUNITIES

Serve side by side and grow closer together on a short-term family mission trip to the Pacific Northwest. These experiences are intentionally created for families who want to live out their faith as a team—parents and kids serving, learning, and worshipping together. From community outreach to supporting local ministries, families engage in meaningful service while creating lasting memories. It's more than volunteering—it's shared purpose, shared growth, and a shared adventure in following God together.



## Connect, Visit, & Pray for Church Plants

The Pacific Northwest is home to a growing movement of new church plants bringing hope to cities and neighborhoods across the region - and Southeast currently supports 6 different church plants!

You can be part of what God is doing by connecting with these leaders, visiting to see the mission firsthand, and committing to pray for their communities. Whether you stop in to worship, encourage a church planting family, or simply walk the streets in prayer, your presence and partnership matter. Every visit or message strengthens relationships, and every prayer fuels the work of planting vibrant, gospel-centered churches throughout the PNW.



You can be  
part of what  
God is doing.

## Church Plant List

### **Odyssey Church**

Tukwila, WA

Lead Planter: Zeb Greenfield

Launch Date: Fall 2025

### **One Church**

Seattle, WA

Lead Planter: Filmore Bouldes

Launch Date: September 29, 2024

### **The Cove Church**

Lakewood, WA

Lead Planter: EJ Brown

Launch Date: Fall 2025

### **Counter Culture Church**

Portland, OR

Lead Planter: Jesse Lusko

Launch Date: September 10, 2023

### **Generations Church**

Eugene, OR

Lead Planter: Sol Rexius

Launch Date: January 21, 2024

### **Oasis City Church**

Boise, ID

Lead Planter: Landon Hairgrove

Launch Date: February 19, 2023





## Pacific Northwest

[WWW.SEUNLEASHED.COM](http://WWW.SEUNLEASHED.COM)

SOUTHEAST CHRISTIAN CHURCH

To see the digital  
version of this  
guide, scan here:



PLACEHOLDER

